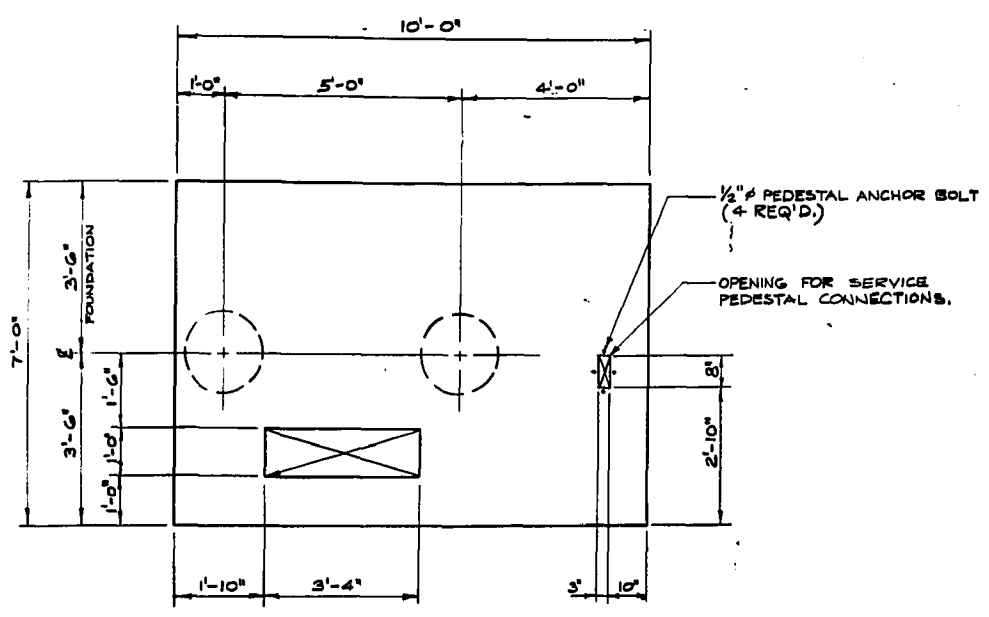
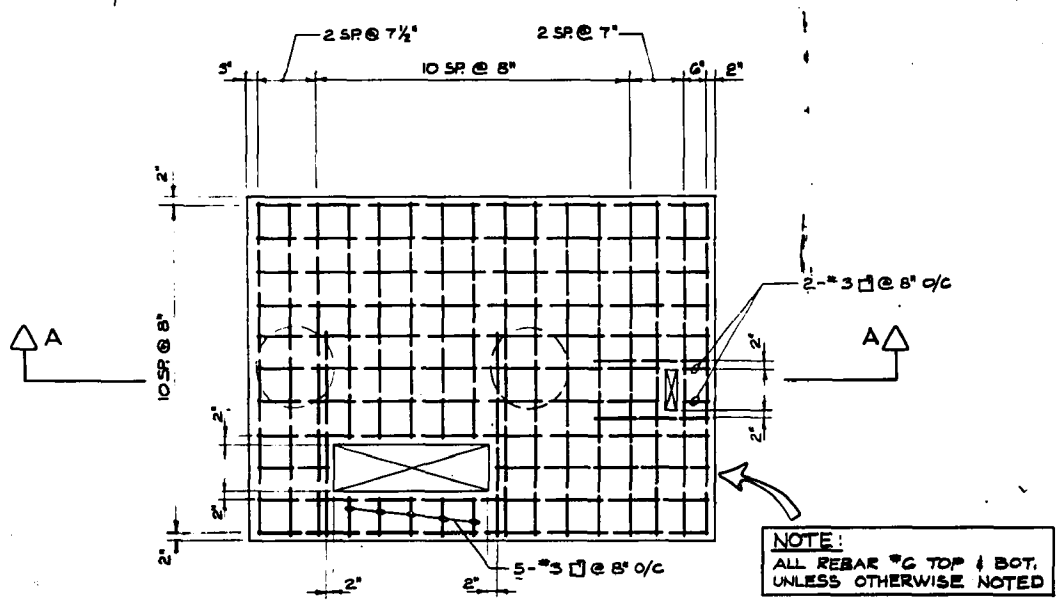


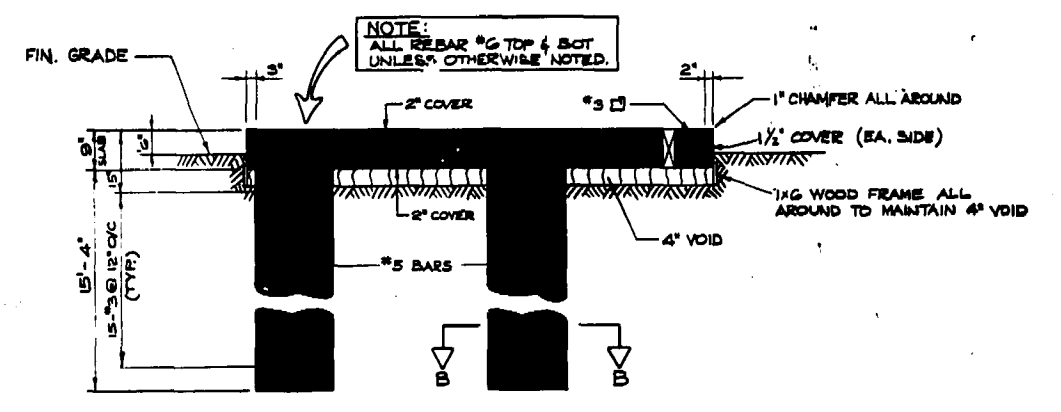
REF. or DRAWING No. **1074** file # **SP10268**
 DETAILS



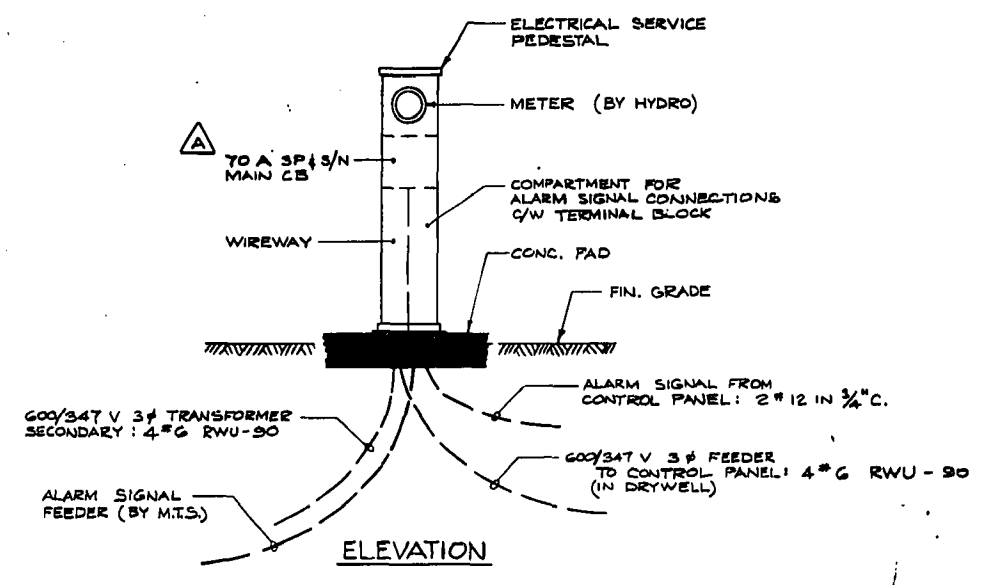
PLAN - TRANSFORMER PAD
 3/8" = 1'-0"



REINFORCING PLAN
 3/8" = 1'-0"

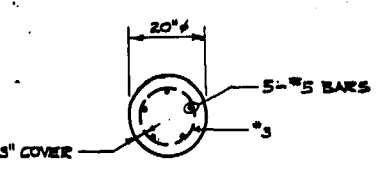


SECTION A - A
 3/8" = 1'-0"



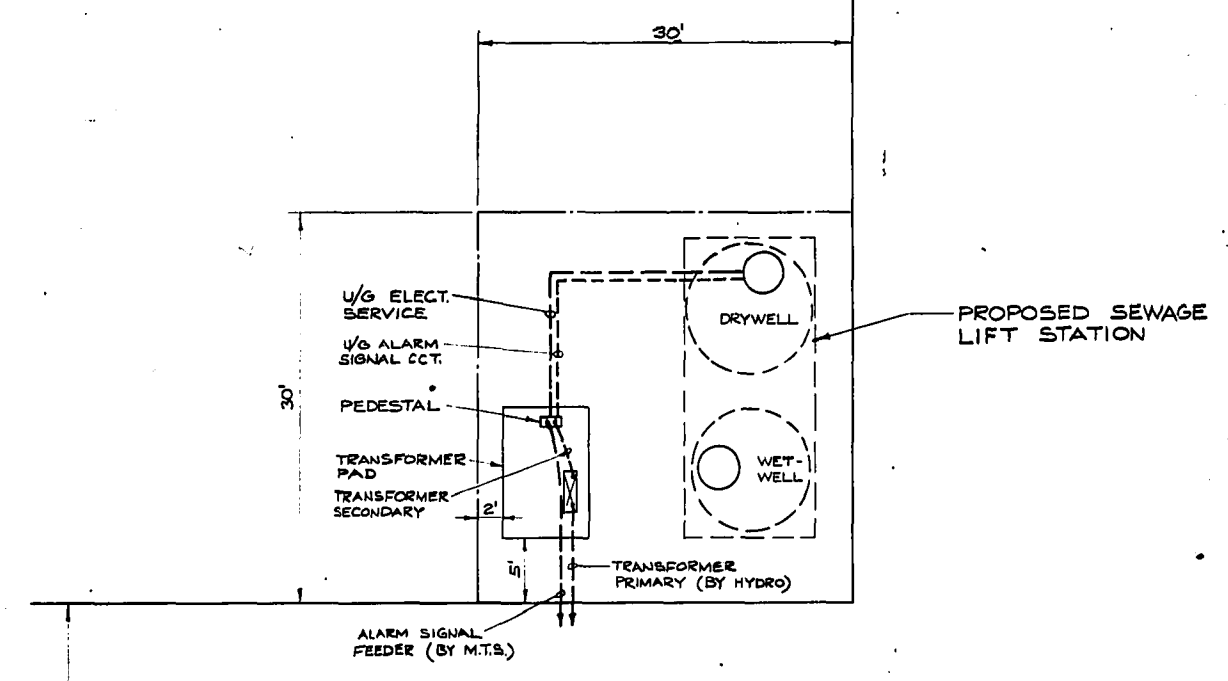
ELECTRICAL SERVICE PEDESTAL DETAILS
 N.T.S.

- GENERAL NOTES**
- ALL CONCRETE SHALL HAVE A MINIMUM COMPRESSIVE STRENGTH OF $f_c' = 5000$ PSI. @ 28 DAYS.
 - USE SULPHATE RESISTANT CEMENT FOR ALL CONCRETE.
 - REINFORCING STEEL SHALL BE INTERMEDIATE GRADE BILLET STEEL ($f_y = 40,000$ PSI) DEFORMED BARS.



SECTION B - B

BLOCK 8



LOCATION PLAN
 1" = 10'



| | | | | |
|--|--|---|----------------------------------|-----------------------|
| UNDERWOOD McLELLAN & ASSOCIATES LTD. ENGINEERING & PLANNING CONSULTANTS BRITISH COLUMBIA - ALBERTA - SASKATCHEWAN - MANITOBA - ONTARIO | | CITY OF WINNIFEG COMMUNITY OF LORD SELKIRK | | SCALE AS SHOWN |
| APPROVED BY <i>[Signature]</i> | DATE 12/10/74 | CASTLEWOOD HOMES LIMITED | | JOB No. 02-1834-03-05 |
| DRAWN BY L.S. | DESIGNED BY J.K.D. | SEWAGE LIFT STATION | | SHEET 2 OF 2 |
| REV. No. A | DESCRIPTION CHANGED MAIN CB FROM 70A 2P TO 70A 5P (S/N) | DATE NOV. 8/74 | CHECKED BY <i>[Signature]</i> | REV. A |

| | | | |
|---------|--------------------|----|---|
| REVISED | ELECTRICAL DETAILS | 02 | A |
|---------|--------------------|----|---|

file # SP10268